



Xishan Primary School Primary 2 Parents' Engagement Session

Kindly ensure your name
for this webinar is as follows:
Your Child's Full Name_Class
i.e. MARK_2 Respect

**Please scan the following QR code to
complete your attendance for this session:**



<https://go.gov.sg/pe52025>

<RESTRICTED/NON-SENSITIVE>

Every Xishanite, A Life-Long Learner, A Contributing Citizen





**Growing Legacy,
Creating Possibilities Together**
Xishan Primary School
2025

(Start with Me)

Objectives

- Share latest information on educational policies, school direction and level programmes.
- Strengthen home-school partnership.
- Foster a close partnership and establish a communication channel.

<RESTRICTED/NON-SENSITIVE>

Every Xishanite, A Life-Long Learner, A Contributing Citizen



Agenda	Presenters
<p>School Focus & Direction</p>	<p>Mrs Jane Chng Principal</p>
<p>P2 Level Programmes Assessment in Learning CCA P3 Class Allocation</p>	<p>Mr Sahir Year Head (P2 & P5)</p>
<p>Class Leadership Form Teachers' Time (FTT) Well-Being & Gratitude</p>	<p>Respective FTs</p>

<RESTRICTED/NON-SENSITIVE>

Every Xishanite, A Life-Long Learner, A Contributing Citizen





01

P2 Level Programmes

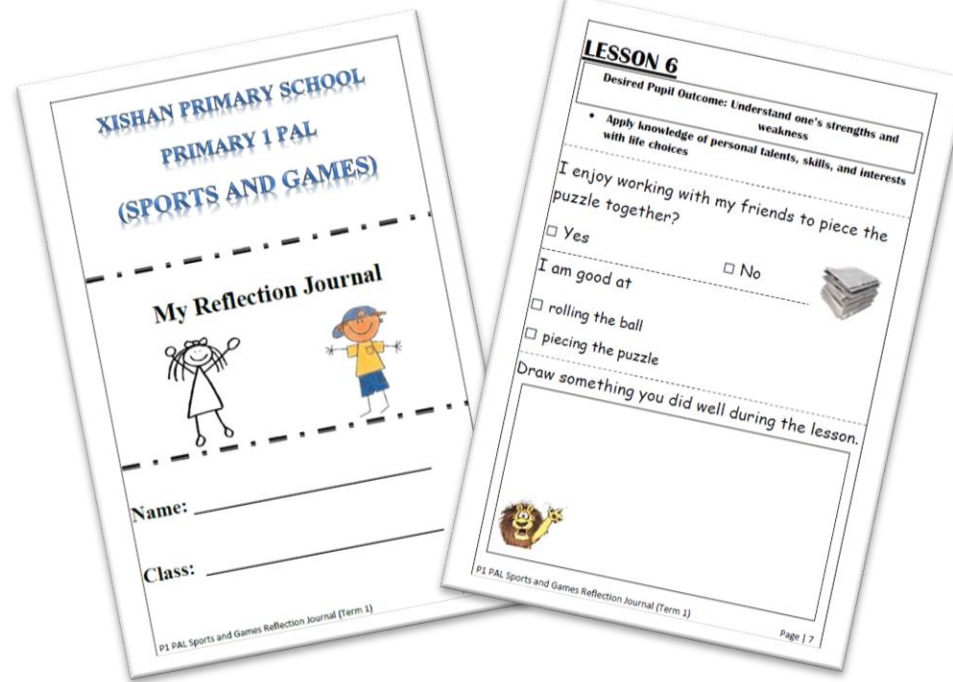
<RESTRICTED/NON-SENSITIVE>

Every Xishanite, A Life-Long Learner, A Contributing Citizen



PAL

Programme for Active Learning



<RESTRICTED/NON-SENSITIVE>

- To nurture confidence, curiosity and co-operation skills in P1 & P2 students.
- The 4 PAL domains are:
 - Sports & Games
 - Outdoor Education
 - Performing Arts
 - Visual Arts

Every Xishanite, A Life-Long Learner, A Contributing Citizen



PAL

Programme for Active Learning

- With alignment to CCE 2021, our current PAL lessons also include additional knowledge and skills outcomes:

Knowledge Outcomes:

1. Curiosity
2. Working Together



Skills Outcomes:

1. Self Motivation
2. Positivity
3. Self Reflection
4. Interpersonal Communication

<RESTRICTED/NON-SENSITIVE>



PAL

Programme for
Active Learning

Tinkering Programme

- Infusing of 2 robotics lessons during PAL periods every term
- Teacher-led programme
- All PAL teachers have gone through the required training by external trainers.



<RESTRICTED/NON-SENSITIVE>

Every Xishanite, A Life-Long Learner, A Contributing Citizen



Stellar Science Sparkles Science Programme



- A programme carried out during curriculum time for P1 & P2 students to spark their interest in Science.
- Students learn basic Science concepts through Science experiments and toy-making; learning is led by P6 seniors.

<RESTRICTED/NON-SENSITIVE>





Sports Education Programme

Taekwondo (April)



<RESTRICTED/NON-SENSITIVE>

Every Xishanite, A Life-Long Learner, A Contributing Citizen



ALP

Applied Learning Programme (NEXUS)

Developing Confident Communicators through Journalism and Media Broadcast

- Carried out during EL, MT & CCE lessons
- Lower primary will focus on choral recitation and Reader's Theatre.



<RESTRICTED/NON-SENSITIVE>

Every Xishanite, A Life-Long Learner, A Contributing Citizen



Primary 2 Readers' Theatre



ALP

Applied Learning Programme

- Readers' theatre is oral reading through reading parts in the scripts.
- Students are not required to memorise the script but they reread it several times to develop their reading fluency skills with expression and confidence.



<RESTRICTED/NON-SENSITIVE>

Every Xishanite, A Life-Long Learner, A Contributing Citizen



Nurturing Xishan's I C²ARE Leader

* Xishan's
I C²ARE Leader

Innovative

Compassionate

Connected

Advocating

Role Modelling

Empathetic



RESTRICTED/NOT SENSITIVE

Every Xishanite, A Life-Long Learner, A Contributing Citizen



3Cs	E21CC Learning Goals	Target Level
Create (CAIT)	Make sound decisions, explaining rationale	P3
	Generate ideas	P5
	Solve problems	P6
Connect (CCI)	Monitor & manage own thoughts & emotions	P1
	Listen actively	P2
	Accept differing views	P3
	Communicate with empathy and respect	P4
Contribute (CGC)	Aware of others' needs	P4
	Plays a role in bettering the class/school/ community	All

<RESTRICTED/NON-SENSITIVE>

Every Xishanite, A Life-Long Learner, A Contributing Citizen



Level	E21CC Skill Training Area	Leadership Theme	Key Skills
P1	How to Manage My Emotions & Behaviour (Self-management strategies)	The Role Model Leader	- Accountability - Integrity - Self-regulation
P2	Building Connections through Active Listening	The Connected Leader	- Active listening - Turn taking
P3	Compassion for Others: Building Awareness, Fostering Kindness	The Compassionate Leader	- Inclusivity - Aware of issues - Understanding challenges
P4	Expressing Empathy & Considering Multiple Perspectives	The Empathetic Leader	- Solicit feedback - Empowering others - Managing conflict
P5	Idea Generation: Building Creativity	The Innovative Leader	- Design thinking
P6	Problem Solving: Making the World a Better Place	The Advocating Leader	- Global issues - Passionate communication

<RESTRICTED/NON-SENSITIVE>

Every Xishanite, A Life-Long Learner, A Contributing Citizen





02

Assessment in Lower Primary

<RESTRICTED/NON-SENSITIVE>

Every Xishanite, A Life-Long Learner, A Contributing Citizen



Learning Outcomes (Quick Recap)

- All P2 students will be assessed through **Learning Outcomes** that their subject teachers observe throughout the year.
- **No marks** will be assigned. Termly progress checks and formative assessments that the students sit for are all **non-weighted**.
- Objective is to focus on nurturing the joy of learning and holistic development & well-being



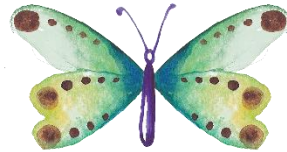
<RESTRICTED/NON-SENSITIVE>



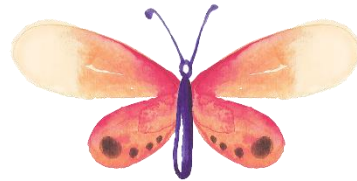
Different Levels of Progress



Beginning



Developing



Competent



Accomplished

<RESTRICTED/NON-SENSITIVE>

Every Xishanite, A Life-Long Learner, A Contributing Citizen



Holistic Progress Reporting

- Issued in Term 1 & Term 3, starting from 2024
- Reporting of learning dispositions observed by subject teachers over a term
- Nurturing positive dispositions has a direct impact on students' effort to learn and grow

<RESTRICTED/NON-SENSITIVE>

Every Xishanite, A Life-Long Learner, A Contributing Citizen



Holistic Progress Reporting

PR²O Learning Dispositions	Learning Behaviours
<p><u>P</u>erseverance (Being motivated to persist and learn through challenges)</p>	<ul style="list-style-type: none"> • The student does not give up easily when faced with learning challenges. • The student understands that he/she can improve if he/she puts in hard work and effort.
<p><u>R</u>eadiness (Being ready to learn by staying focused, curious and responsible)</p>	<ul style="list-style-type: none"> • Student can stay focused and attentive during lessons. • Student enjoys learning and he/she participates actively in learning activities.
<p><u>R</u>eflectiveness (Being self-directed to think about what has been done, seen, heard and felt to sense-make for deeper learning)</p>	<ul style="list-style-type: none"> • Student makes the effort to review his/her work and makes corrections to improve it.
<p><u>O</u>penness (Being willing to work well with and learn from others)</p>	<ul style="list-style-type: none"> • The student can cooperate well with his/her peers by listening and taking turns during group work.

<RESTRICTED/NON-SENSITIVE>



Submission of Quality Assignments

Success Criteria	Progress Levels
Quality of assignments <ul style="list-style-type: none">• The student puts in the effort to complete all questions and does not leave any blanks.• The student demonstrates critical thinking and depth of understanding of content taught.	<ul style="list-style-type: none">• Always• Usually• Seldom
Timeliness of submission <ul style="list-style-type: none">• Assignments are submitted on time.• There is a valid reason for any late submission.	
Completion of corrections <ul style="list-style-type: none">• The student puts in the effort to close learning gaps through corrections.	

<RESTRICTED/NON-SENSITIVE>

Every Xishanite, A Life-Long Learner, A Contributing Citizen





03

CCA Selection

<RESTRICTED/NON-SENSITIVE>

Every Xishanite, A Life-Long Learner, A Contributing Citizen



CCA Selection

- P2s will be invited to select a CCA in Semester 2.
- Parents are invited to attend our **CCA Bazaar** on 11 July 2025 (Fri) with your child. It is a good opportunity to explore our variety of CCA offerings with your child.
- More details will be provided nearer to date.
- You may also get more information on our CCA offerings via our school website.



<RESTRICTED/NON-SENSITIVE>





04

P3 Class Allocation

<RESTRICTED/NON-SENSITIVE>

Every Xishanite, A Life-Long Learner, A Contributing Citizen



How are classes allocated for P3?



Students will **not** be assigned to classes based on their academic abilities.

Classes will be of **mixed abilities** where **differentiated** approaches will be used by teachers to cater to the different needs of the students.

E.g.:
Stretch programmes
Pull-out classes

<RESTRICTED/NON-SENSITIVE>





Mr Sahir Mohamed Tauhid
Year Head (P2 & P5)

sahir_abdullah@moe.edu.sg

General Office: 67588837

<RESTRICTED/NON-SENSITIVE>

Every Xishanite, A Life-Long Learner, A Contributing Citizen

