



# Xishan Primary School Parents Engagement 2025

## Primary 5

### *Principal's Briefing*

Every Xishanite, A Life-Long Learner, A Contributing Citizen



# School Leaders

---

From left:

- Ms Latha (Vice-Principal)
- Mrs Jane Chng (Principal)
- Mdm Sophia Lee (Vice-Principal/Admin)



# Our Primary 5 Year Head



Mr Sahir Bin Mohamed Tauhid  
**Year Head (P2 & P5)**

Every Xishanite, A Life-Long Learner, A Contributing Citizen



# Our Primary 5 Form Teachers

## 5 Self-Discipline

## 5 Integrity



Ms Goh Xin Yi



Mr Christopher  
Martin



Ms Tan Li Ting



Ms Eugenia Aw

Every Xishanite, A Life-Long Learner, A Contributing Citizen



# Our Primary 5 Form Teachers

5 Respect

5 Resilience



Ms Tery Lou



Ms Dayna Wang



Mdm Siti Sarah



Mdm Natalie Lam

Every Xishanite, A Life-Long Learner, A Contributing Citizen



# Our Primary 5 Form Teachers

5 Love



Mdm Yu Lu



Mdm Nurfarazila

Every Xishanite, A Life-Long Learner, A Contributing Citizen





# Our Directional Statements

**Vision** Every Xishanite,  
A Lifelong Learner,  
A Contributing Citizen

**Mission** To create opportunities where passions are ignited, potential discovered & dreams realised

**Values** Self-Discipline  
Integrity  
Respect  
Resilience

**Motto** Love  
Care  
Share

**Philosophy** Every child can and wants to learn



Strategic Focus: Holistic Well-Being through Keep C.A.L.M & Give



## **Confident & Connected Learner**

Keep **C.A.L.M.** & **Give** (KCG)  
Framework





Launched on 21 Jan 2025; a national health promotion strategy to enhance preventive care & inculcate healthier lifestyles in children

# School Theme & Collective Goal in 2025

- 1. Celebrating our rich heritage of 88 years & building on our strengths**  
- Xishan spirit of 'Love, Care, Share', committed and caring staff
- 2. Looking ahead to grow and innovate with infinite possibilities as one community**



Every Xishanite, A Life-Long Learner, A Contributing Citizen



# Start with 'ME'



## What must Xishanites do to be future-ready?

- **Take responsibility for yourself** – focus on how your actions, words, and choices can positively impact yourself and others.
- If every Xishanite takes charge and plays his/her part, Xishan will be more conducive for learning and play.



**What can I do to play my part  
as a responsible Xishanite?**

I can use kind words and make  
someone's day. Who knows, he  
may pass the kindness  
forward!

Xishan is like a garden.  
Every Xishanite plays  
his/her part by planting  
a seed. Over time, we  
will grow a beautiful  
garden together.

I can keep my areas  
clean & help pick  
up litter I see.  
Let's not pile on  
more work for the  
aunties & uncles!

I can also be  
responsible at  
home. Mummy will  
be pleased that I  
completed my  
homework before  
play time.



# ‘Start with Me’ Term 1 Challenge

*Take the first step to lead yourself!*

Term 1 Value:  
Self-Discipline

## **P1 – P3 Challenge:**

- ✓ Record your homework in your handbook and complete it diligently.

## **P4 – P6 Challenge:**

- ✓ Record homework AND use the Term 1 Planner (pgs. 50 & 51) to plan your tasks and manage your time effectively.

# PSLE SCORING SYSTEM



## STUDENTS WITH SIMILAR SCORES IN EACH SUBJECT WILL BE GROUPED INTO THE SAME ACHIEVEMENT LEVEL

- There are 8 Achievement Levels (ALs), with AL1 being the best.
- Each AL reflects how well students have done relative to learning objectives of the curriculum.
- A student's AL for each subject will reflect his level of achievement, rather than how he has performed relative to his peers.

PER SUBJECT
AL 1 (BEST)
AL 2
AL 3
AL 4
AL 5
AL 6
AL 7
AL 8 (UNGRADED)

## SCORE BANDS FOR STANDARD SUBJECTS

<b>AL</b>	<b>RAW MARK RANGE</b>
<b>1</b>	<b><math>\geq 90</math></b>
<b>2</b>	<b>85 – 89</b>
<b>3</b>	<b>80 – 84</b>
<b>4</b>	<b>75 – 79</b>
<b>5</b>	<b>65 – 74</b>
<b>6</b>	<b>45 – 64</b>
<b>7</b>	<b>20 – 44</b>
<b>8</b>	<b><math>&lt; 20</math></b>



# 4 SUBJECT ALs WILL BE ADDED TO FORM THE OVERALL PSLE SCORE

- The PSLE Score can range from 4 – 32, with 4 being the best.
- Students will be placed in Posting Groups based on their PSLE Score – G1, G2 or G3.



ENGLISH LANGUAGE AL 3

MOTHER TONGUE LANGUAGE AL 2

MATHEMATICS AL 1

SCIENCE AL 2

**PSLE SCORE: 8**

PLACEMENT OUTCOME	PSLE SCORE
G3	4 – 20
G3/G2 OPTION	21 – 22
G2	23 – 24
G2/G1 OPTION	25
G1	26 – 30, with AL 7 or better in both EL and MA

# FOUNDATION LEVEL SUBJECT GRADES WILL ALSO BE LESS FINELY DIFFERENTIATED

- Foundation subject grades will also be graded in scoring bands from **AL A to C**.
- For the purpose of S1 Posting, AL A to AL C for Foundation level subjects will be **mapped to AL 6 to AL 8 of Standard level subjects respectively**, to derive a student's overall PSLE Score.

<b>FOUNDATION LEVEL AL</b>	<b>FOUNDATION RAW MARK RANGE</b>	<b>EQUIVALENT STANDARD LEVEL AL</b>
<b>A</b>	<b>75 – 100</b>	<b>6</b>
<b>B</b>	<b>30 – 74</b>	<b>7</b>
<b>C</b>	<b>&lt; 30</b>	<b>8</b>

# Presentation of P5 results in the Holistic Development Profile (report book)

- To familiarise students and parents with the AL system, P5 and P6 students will receive their school-based assessment results in ALs.

Holistic Development Profile						
						Page: 1 of 1
						Date: 29 Nov 2020
Name	: Joyce				Identification No: T09XXXXXF	
Age on 1 <sup>st</sup> Jan	: 10				Subject Combination: 3S1F(FSC)	
Class	: 5 Challenge	S/N	: 5			
Form Teacher	: Miss Tan					
Co-Form teacher	: Miss Low					
SUBJECT	TERM 3: WA		END OF YEAR EXAM		OVERALL	
	Mark	AL	Mark	AL	Mark	AL
ENGLISH LANGUAGE	85	2	88	2	86	2
MATHEMATICS	74	5	76	4	75	4
FOUNDATION SCIENCE	65	B	74	B	70	B
CHINESE LANGUAGE	87	2	88	2	88	2
	Grade		Grade		Grade	
SOCIAL STUDIES	-	-	-	-	-	A
ART	-	-	-	-	-	A
MUSIC	-	-	-	-	-	B
PHYSICAL EDUCATION	-	-	-	-	-	B
<b>OVERALL</b>						
Total Achievement Level (AL) Score	: 15					
Attendance	: 95/95					
Class for Next Year	: P6-CH					
Subject Combination for Next Year	: 3S1F(FSC)					

# TRANSITION FROM P4 TO P5

## Challenges:

- Increased academic workload & expectations
- New classmates and social dynamics
- Onset of puberty – physical, emotional (increased sensitivity; exploration of identity) & social changes (increased peer influence, friendship issues)

## Opportunities:

- Develop positive habits
- Build character strengths of resilience and adaptability
- Explore new interests and talents

## Mindset

Build in the Growth Mindset

(Mistakes are opportunities for learning & learning requires effort & struggle)

## Motivation

Connect with your child and seek to understand his/her 'world' & lived reality

## Method

Set up home structures & routines; manage distractions, supervise use of devices (social media & online games)

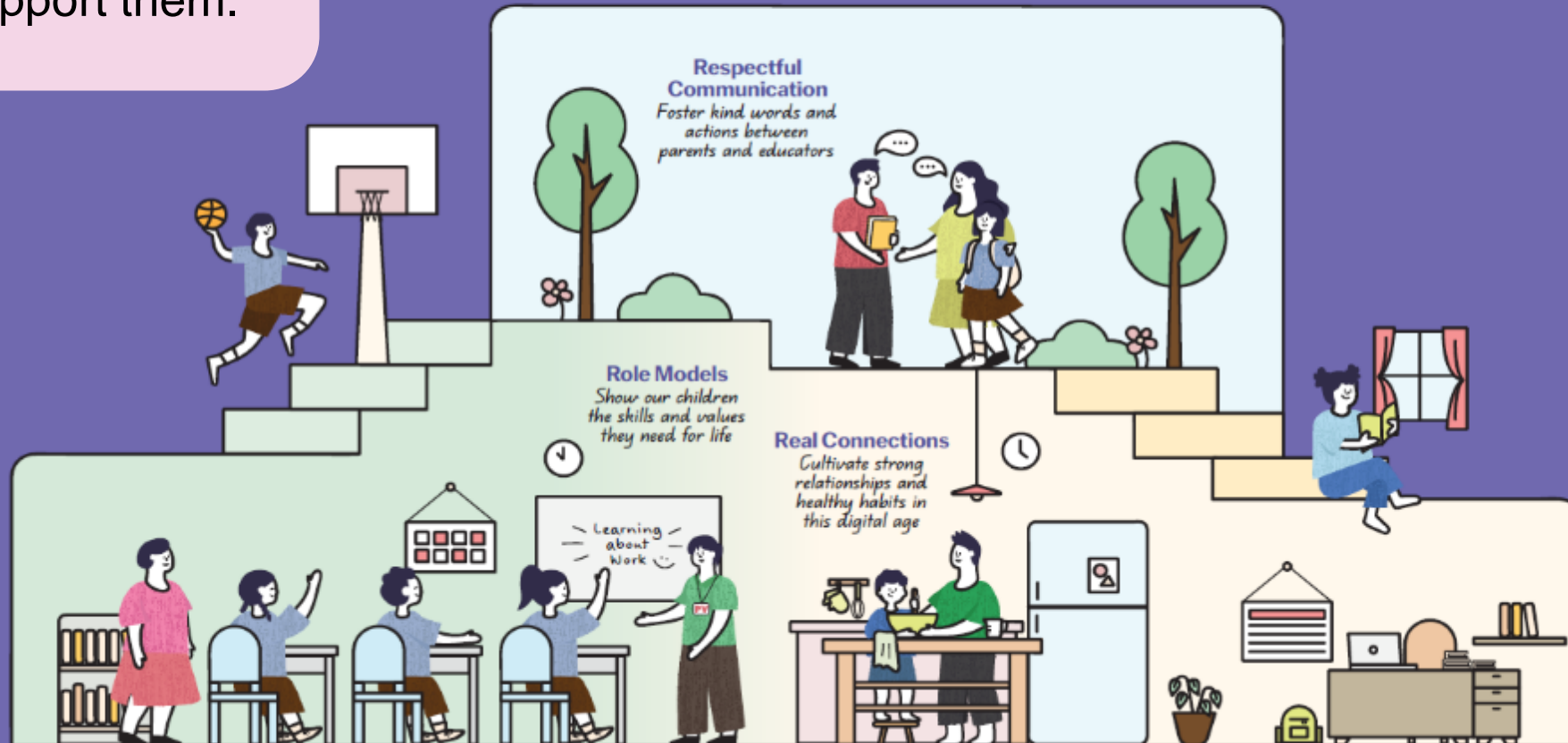


# School-Home Partnership

Our children do best when schools and parents work hand in hand to support them.

Guidelines for School-Home Partnership

## Raising a Happy, Confident, and Kind Generation Together



# 3 areas we can work together on to foster School-Home Partnership

## 1 Respectful Communication

*Foster kind words & actions between parents & teachers, including admin staff*

*Communicate through official channels during school hours (weekdays; 7.30am – 5.30pm)*



## 2 Role Models

*Show our children the skills & values they need for life*

## 3 Real Connections

*Cultivate strong relationships & healthy habits in this digital age*

We look forward to a strong partnership with you.

Together, we can nurture lifelong habits, dispositions & skills in our Xishanites.

Thank You.

---



**Growing Legacy,  
Creating Possibilities Together**  
Xishan Primary School  
2025

**Start with 'ME'**

Every Xishanite, A Life-Long Learner, A Contributing Citizen

